

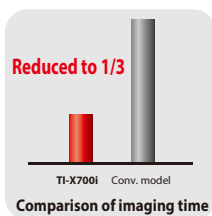
# Ideal for automation and manpower saving Inline X-ray automatic inspection system



Ultra high-speed CT X-ray inspection system

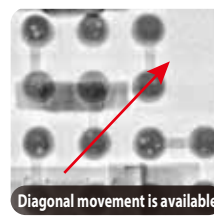
X-RAY INSPECTOR  
**TI-X700i**

## High speed imaging



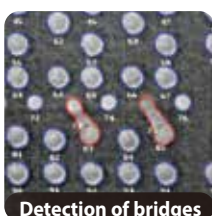
- Parallel table type
- Effective utilization of the field of view without vignetting in CT images
- $\mu$ m-order positioning accuracy with proprietary motor control technology

## Easy operation



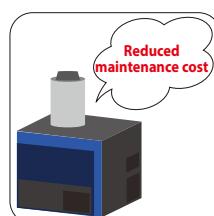
- Equipped with joystick
- High operability and robustness allows for quick operation without delay

## Automatic detection of defects



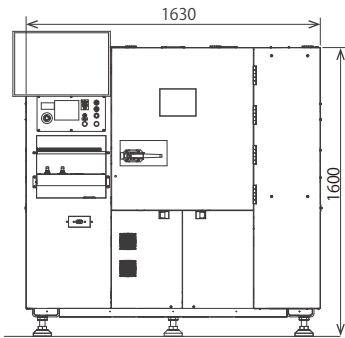
- Automatic inspection capability for 90 $\mu$ m bumps  
Capable of detecting non-wetting defects

## Maintenance free

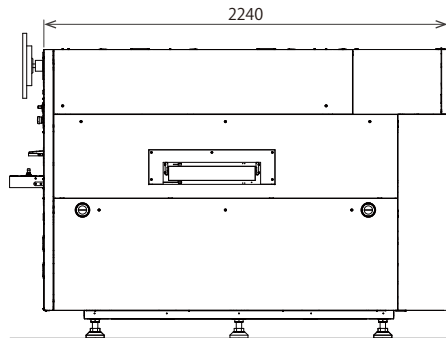


- Sealed type x-ray tube using the transmission target  
Achieved high-power and stability for sealed type x-ray tubes as well as resolution, high magnification and wide radiation angle equivalent to those of open type x-ray tubes
- No maintenance work required

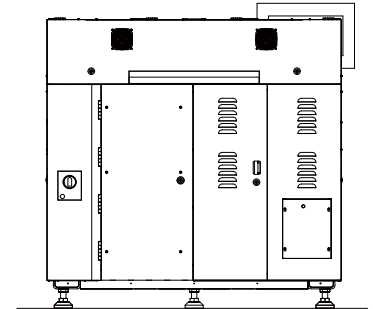
# Specifications



Front view



Side view



Rear view

## Inspection specification

<b>Work size</b>	X:350 x Y:350mm
<b>Work thickness</b>	Max. 6mm
<b>Work weight</b>	Max. 2.5kg
<b>Board top/bottom clearance</b>	Top : 7mm / Bottom : 0mm
<b>Inspection item</b>	2D : Component inspection and solder bump inspection using transmission image 3D : Solder bump inspection using transmission image planting-filled TH inspection using CT image

## System specification

<b>X-ray source</b>	Sealed transmissive microfocus tube / Tube voltage : 40-110kV / Tube current : 10-100 $\mu$ A / Focus spot size : 2 $\mu$ m
<b>Detector</b>	Sensor Type : 6.9 mega pixel
<b>Max. Oblique capturing angle</b>	55°
<b>Geometric magnification</b>	Vertical capturing : Max. x71 / Oblique angle capturing : Max. x71
<b>Image resolution</b>	Vertical capturing : Max. 0.7 $\mu$ m / Oblique angle capturing : Max. 0.7 $\mu$ m
<b>Power voltage</b>	Three-phase AC200-240V / 7kVA / 50/60Hz
<b>X-ray leakage dose</b>	0.5 $\mu$ Sv/h or less
<b>Footprint &amp; Weight</b>	W1,630 x D2,240 x H1,600mm / 4,500kg

Specification herein is subject to change without prior notice.

<Distributor>



TECHNO HORIZON CO., LTD.

## TECHNO HORIZON CO., LTD.

1-3-4 Shioya-cho, Minami-ku, Nagoya, Aichi Prefecture, Japan 457-0078  
TEL.+81-52-811-5144 FAX.+81-52-824-7300  
[https://www.technohorizon.co.jp/lp/manufacturing\\_quality\\_solutions/](https://www.technohorizon.co.jp/lp/manufacturing_quality_solutions/)