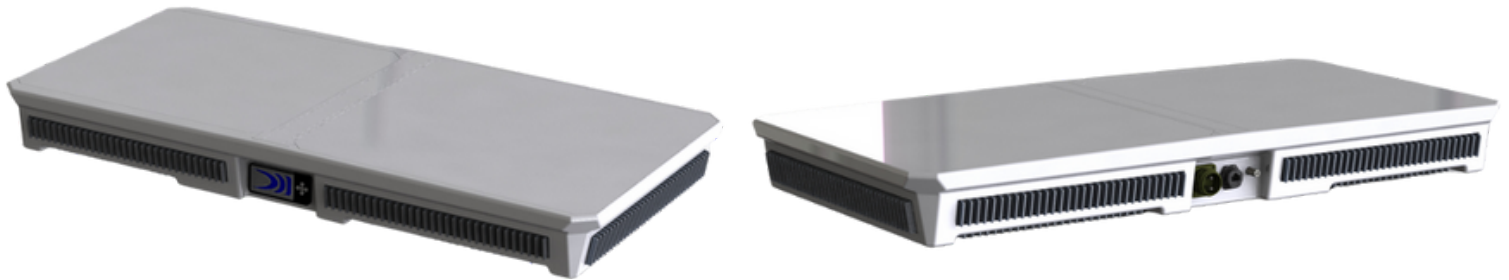


RESA M Ku Multi-Orbit

Requtech Electronically Scanned Antenna

- fully integrated satellite terminal for mobility on GEO & LEO



RESA M Ku Multi-Orbit is a fully integrated Electronically scanned array antenna terminal for Multi-Orbit functionality across LEO and GEO constellations for on-the-move and on-the-pause applications. This ruggedized terminal is designed for high reliability and high throughput with efficient acquisition and tracking algorithms. The fully electronically steered solution results in the lowest Size, Weight, and Power for Maximum Performance.

RESA series supports Marine, Vehicle & Portable applications

KEY FEATURES

- Fully integrated ruggedized satellite terminal.
- Fast deployment and acquisition and tracking with electronically scanned pointing and tracking.
- Mesh networking of several devices supported.
- Multi-Orbit GEO & LEO Ku frequency band operation.
- Modem integrated for internal or external installation.
- Ruggedized design for maritime operation.
- ITU-R S.465 compliant patterns.
- Integrated antenna control unit with full sensor kit: beacon receiver, GPS, IMU.
- Operational temperature range -20 to +55 °C / -5 to +130 °F.

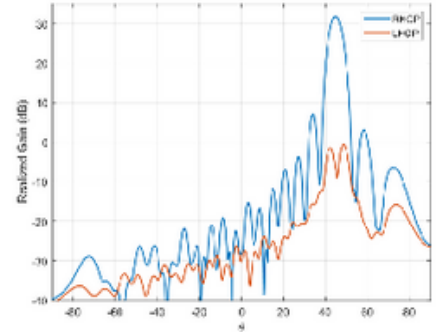
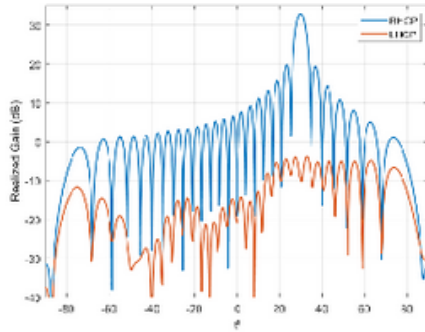
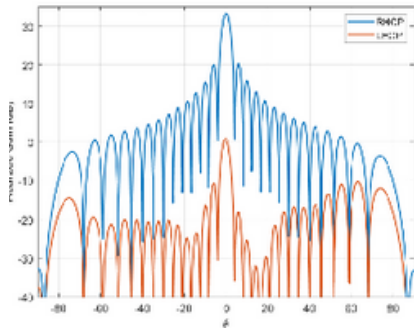


TECHNICAL DETAILS

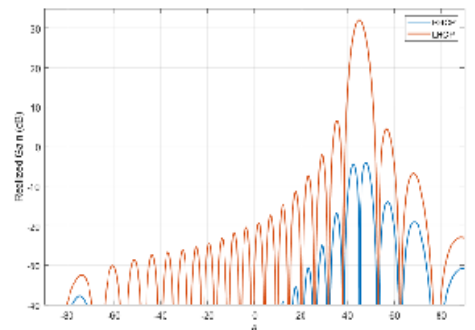
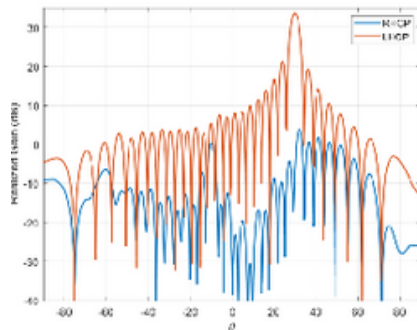
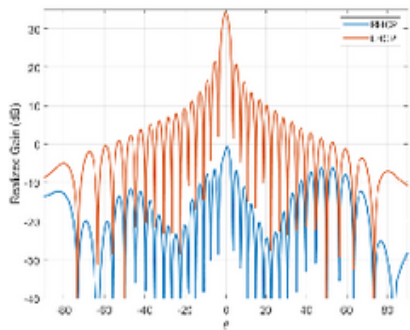
RF PERFORMANCE	
TX Frequency	GEO 13.75 – 14.5 GHz OneWeb 14. – 14.5 GHz
RX Frequency	GEO 10.7- 12.75 GHz OneWeb 10.7 – 12.75 GHz
G/T, typical (boresight)	GEO 11 dB/K OneWeb 11 dB/K
Linear EIRP (boresight)	GEO 49 dBW OneWeb 36.6 dBW (OneWeb required)
Polarity	Linear or Circular electronically switched
Side-lobe PDR Tx	PSD Tx FCC 25.218
Tx XPD	25 dB
Rx XPD	25 dB
ELECTRONIC SCANNING SPECIFICATIONS	
Tracking error	< 0.05 dB
Beam update rate	100 Hz
Field of view	160°
Azimuth adjustment	360° with a pointing step size of 0.1°
Elevation adjustment	Electronically beam steering from 10° to 90°

ELECTRICAL SPECIFICATIONS	
Power Supply (excl. Modem)	24V 15A
Power consumption	GEO 480W OneWeb 370W
INTERFACES	
DC Power	MIL-DTL-5015 (2-pin)
Ethernet	RJ45
ENVIRONMENTAL SPECIFICATIONS	
Operating Temperature	-20° to +55°C / -5° to +130°F
Storage Temperature	-40° to +70°C / -40° to +160°F
Protection	IP67
Wind	250 km/h / 155 mph
WEIGHT AND DIMENSIONS	
Dimensions	L84xW45xH13 cm
Terminal Weight	approximately 20 kg depending on configuration

RESA Ku - Rx (12.75 GHz) – Electronic scanning



RESA Ku - Tx (14.25 GHz) – Electronic scanning



Requitech develops state-of-the-art fully integrated systems and microwave components for radar and communications. Our goal is to deliver reliable and robust systems and work with our customers to find the most suitable solutions for each application.

Contact information

Telephone +46 (0)13 311771 E-mail
 info@requitech.se www.requitech.com



The present documentation provides typical specifications and data may change without notice. © All rights reserved. No part of this publication may be reproduced, distributed, or transmitted in any form or by any means, without the prior written permission of ReQuTech AB.

